

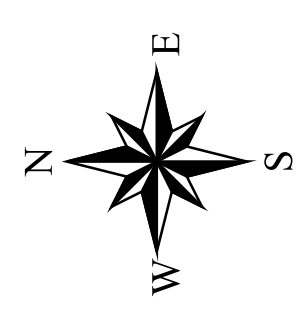
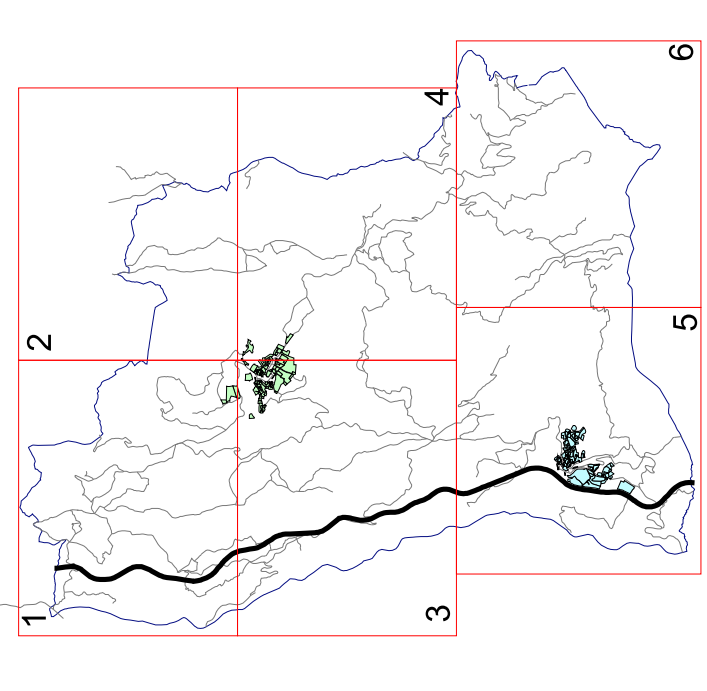
Zonizzazione acustica
del territorio comunale

Classificazione delle aree



Comune di San Benedetto
Val di Sambro

Tavola 1

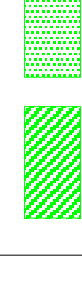
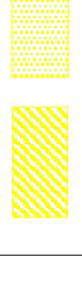
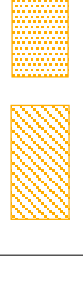

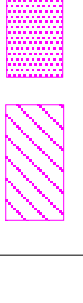
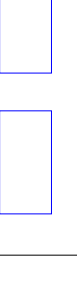


SCALA: 1:5000

Data: Febbraio 2009 Rev.01


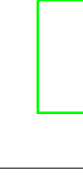
Classi Zonizzazione:

Stato Progetto

-  Classe I "Aree particolarmente protette" dB 50/40
-  Classe II "Aree prevalentemente residenziali" dB 55/45
-  Classe III "Aree di tipo misto" dB 60/50
-  Classe IV "Aree ad intensa attività umana" dB 65/55
-  Classe V "Aree prevalentemente industriali" dB 70/60
-  Classe VI "Aree esclusivamente industriali" dB 70/70

Fiume

Fasce rispetto ferroviario:

-  Fascia A dal DPR 459/98 dB 70/60
-  Fascia B dal DPR 459/98 dB 65/55

Fasce rispetto stradale:

-  Fascia A dal DPR 142/04 dB 70/60
-  Fascia B dal DPR 142/04 dB 65/55



Gruppo di lavoro:
Dott. Massimo Castellan
Dott. Maurizio Castellari

